

UNIVERSITY OF COPENHAGEN



Join Our Multi-cultural Research Teams

– become a PhD student at the
University of Copenhagen



Welcome to the University of Copenhagen

With more than 37,000 students and 7,000 employees, the University of Copenhagen is the largest institution of research and education in Denmark. With eight different faculties, including science, humanities, health sciences, life sciences and social sciences, the diversity of academic environments and scientific approaches is the most distinguishing feature and strength of the University of Copenhagen.

The basic research is considered fundamental to scientific endeavour. The University of Copenhagen is one of the highest ranked,

largest and still growing health and life science centres in Northern Europe, and therefore an excellent choice if you want to place your research fingerprint on future ideas and solutions.

In the coming years, the University of Copenhagen is developing large scale research environments to promote basic and applied discovery research focusing on human proteins, stem cells, basic metabolic research and healthy aging.



**HARM OTTEN (GERMANY),
DEPARTMENT OF CHEMISTRY,
FACULTY OF SCIENCE**

“When I started working here, I was happy to work in a small team of international colleagues, and I really appreciate the easy access to my supervisor. Outside the workplace, Danes can be a little reserved, but in my department they are very helpful, and we eat lunch together and participate in social events.”

Join our multi-cultural research teams

The University of Copenhagen is a multi-cultural research environment. We aim to recruit highly qualified global talents, and in most parts of the University you will work together with international colleagues from many different countries and backgrounds.

The working atmosphere is characterised as being free and informal. There is an open dialogue based on interaction between team members and team leaders, and the work culture at the University of Copenhagen strongly encourages creativity and independent decision-making.

You have the freedom to focus on your research, and as a PhD student you have the opportunity to advance your international career in a world class research team. At the University of Copenhagen, you will find a

high standard of facilities and laboratories, and the research environment is characterised by close public-private collaboration.

When you apply for a position at the University of Copenhagen, you must have excellent communication skills in English, which is the preferred working language in the multicultural teams. The University of Copenhagen offers language training courses if you need to improve your language competences.

Read more on the International Staff Mobility Unit's website: www.ism.ku.dk

**JING WANG (CHINA), DEPARTMENT
OF BIOLOGY, FACULTY OF SCIENCE**

“As a PhD student at the University of Copenhagen, you have to be very self-disciplined, because you have a lot of freedom. I really like our research team – it is like a small family.”



Salary level and living expenses

The salary level in Denmark is relatively high compared to other countries in Europe, but living expenses and taxation in Denmark are equally high. As a PhD student funded by the University of Copenhagen, you receive a salary with the same rights as an employee, including holiday, maternity/paternity leave and a pension scheme as part of your salary.

When you sign your contract as a PhD student at our university, all funding for your research project is already taken care of. You will be able to finish your work on time.

Read more about working conditions at the University of Copenhagen on this website: www.workingconditions.ku.dk

Career path of the researcher at the University of Copenhagen

Competitiveness: In line with the Scandinavian model, the Danish academia is relatively competitive and open to external researchers.

Openness to non-nationals: The Danish system is relatively open to non-nationals although there may be barriers tied to the use of Danish language. Researchers are also advised to contact the departments at which they would like to work before writing an application.

Entry positions: The PhD candidate and the adjunct/postdoc positions are both educational positions. The adjunct position is con-

structed to make the candidate suitable to apply at the associate professor level.

Career requirements/progress: To move to an associate professor position or a professor position, one needs to provide evidence of publications and teaching experience.

Temporary/permanent positions: The PhD candidate and most adjunct/postdoc positions are limited positions. Associate professor positions and professor positions are permanent and thus entail full job security.

Job postings: Please visit the Job Portal at www.employment.ku.dk

Work-life balance

At the University of Copenhagen, we respect the family life of our employees. We believe that you must have time for family and friends alongside having a career at the University. The Danish society is full of organised spare time activities with clubs, sport facilities and a wide range of associations. The work-life balance secures that you have


enough time in weekends and holidays to refresh your mind and return to the workplace full of new energy.

In addition, Denmark is a nice country for families – an excellent education system with public and private schools, nice holiday schemes and low crime.

Equal opportunity

University of Copenhagen is working actively to recruit more qualified female researchers, including PhD students. The aim is to obtain balance between male and female representation in management and research positions at the University as a whole.

At the University of Copenhagen, it is an important value to treat everyone as equals, no matter their nationality, sex, religion, ethnic background or sexual orientation.

A close-up portrait of a young woman with short, curly brown hair, smiling warmly. She is wearing a dark blue sweater and small hoop earrings. The background is a soft-focus green, suggesting an outdoor setting with foliage.

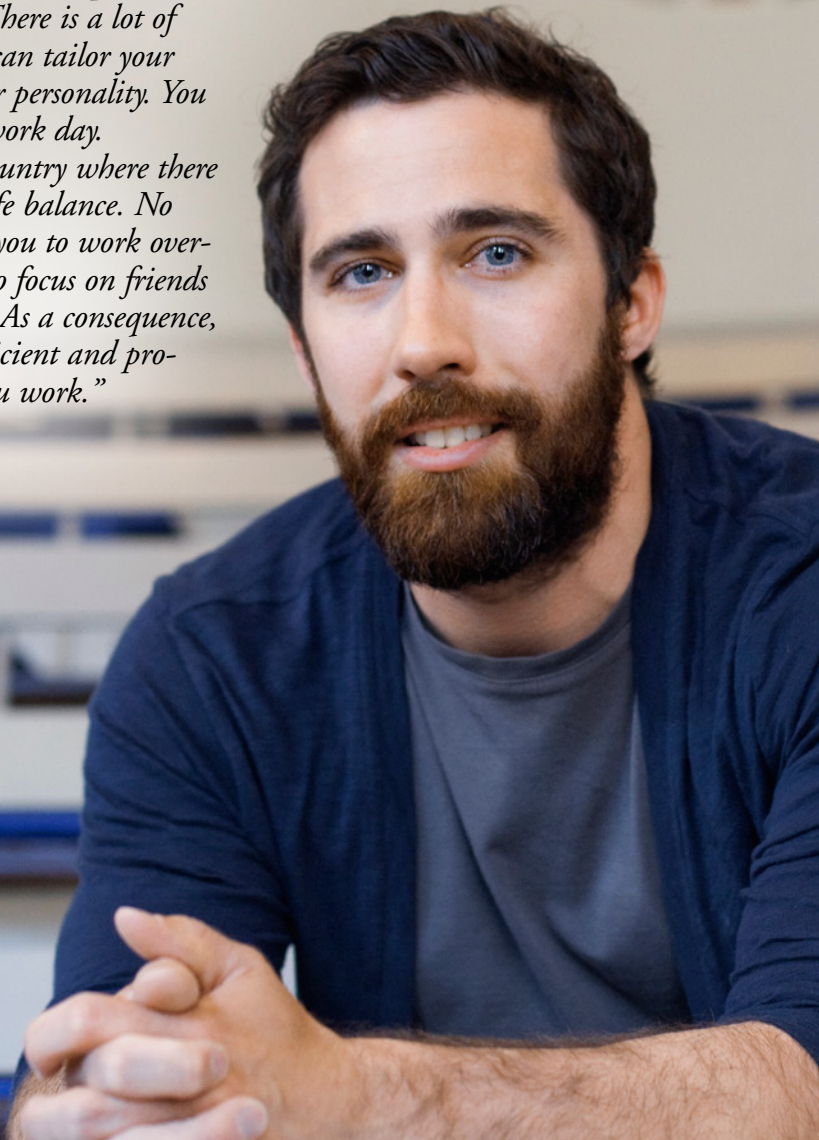
**NATALIE GULSRUD (USA),
FOREST AND LANDSCAPE,
FACULTY OF LIFE SCIENCES**

“What I enjoy most about working at the University of Copenhagen is the freedom I am given as a PhD student to pursue my own research and explore my own ideas. Not only am I receiving a fantastic education, but I am also learning how to be my own project manager.”

**ADRIAN BERTOLI (CANADA),
CENTER FOR HEALTHY AGING,
FACULTY OF HEALTH SCIENCES**



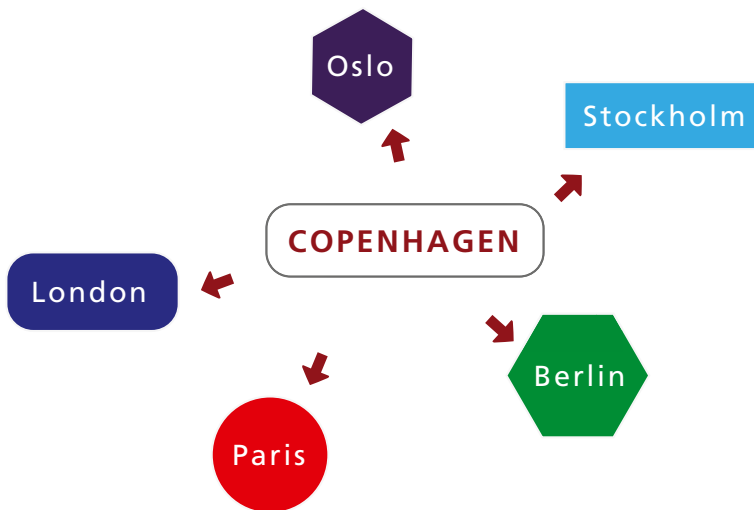
“I like the relaxed atmosphere in the workplace. There is a lot of flexibility - you can tailor your work to suit your personality. You plan your own work day. Denmark is a country where there is a nice work-life balance. No one is expecting you to work overtime; you have to focus on friends and family also. As a consequence, you are more efficient and productive when you work.”



Copenhagen – an international city and gateway to Europe

Copenhagen is the capital of Denmark, with a beautiful harbour front and many parks, as well as a very well developed public transportation system. It is easy to get around in the city by bike, bus, train or subway. In addition, Copenhagen Airport is a gateway to Europe, so with a PhD position at our University you can easily explore the rest of Europe during weekends and holidays.

An increasing amount of international staff members are choosing to work in Copenhagen, so you will have a rich opportunity to meet people with many different cultural backgrounds both at the University and in your spare time.



UNIVERSITY OF COPENHAGEN
INTERNATIONAL STAFF MOBILITY

NØRREGADE 10
DK-1017 COPENHAGEN K
DENMARK

PHONE +45 35 32 22 97
INTERSTAFF@ADM.KU.DK
WWW.ISM.KU.DK